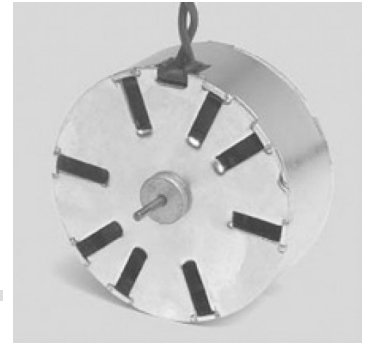




MT0



Uni-Directional Synchronous Motor - 375 RPM

Design

MT0 is a unidirectional motor with a cylindrical sheet-iron stator in which the field poles form the stator ring. In combination with the auxiliary poles (provided with copper shading rings) a rotating field is generated when the coil is energised. The rotor turns in sintered bushings requiring no maintenance. The motor shaft is polished to a mirror finish. Motor can be provided with screw clip for fixing.

Application

Timers, Chart Recorders, Potentiometer Drives, Light Displays, Hour Meters, Cam Timers, Programming Devices and Control Instrumentation.

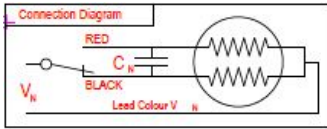
Standard Data

Parameter	Value	Unit
Motor type	Uni directional synchronous; with electrical shading	-
Ambient temperature operation	-15...+55	°C
Ambient temperature storage	-20...+100	°C
Thermal class	105	°C
Electrical Enclosure	IP	40
Connections	Flexible Leads 26 AWG, 200mm length; ends stripped 10 mm	
Life expectancy	3 years in continuous operation	
Mounting	any position	
HVT	As per standard IEC60034-1	
Weight	100	g
Rotor stalling	Motor can be stopped when voltage is applied, without being overheated	
Rotor shaft	Hardened steel, ground and polished	
Bearings	Sintered bronze, self-lubricating	
External dimensions	dia. 42x 18 mm	

Technical Data

Parameter	Value	Unit
Standard Motor Voltages	12,24,110,230 (others on request)	V
Tolerance of voltage	-10...+15% of rated voltage	%
Duty cycle	100	%
Rated frequency	50, 60	Hz
Power output at rated voltage at (50Hz)	0.08	W
Power output at rated voltage at (60Hz)	0.07	W
Speed at (50Hz)	375	Rpm
Speed at (60Hz)	450	Rpm
Running torque at rated voltage at (50Hz)	0.20	Ncm
Running torque at rated voltage at (60Hz)	0.16	Ncm
Power consumption at rated voltage at (50Hz)	1.4	W
Power consumption at rated voltage at (60Hz)	1.5	W

Connection Diagram



Dimensional Drawing

26AWG Leads length 200mm
10mm ends stripped

