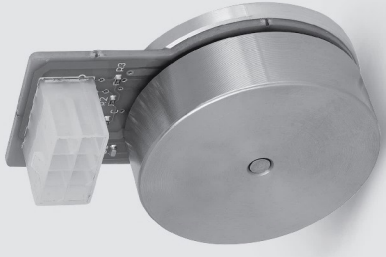


# Motor Series B04219

## Out-runner 42mm BLDC Motor



### Design

BO4219 Series Motors are Brushless DC Outrunner motors with 42mm diameter. These Motors are available with sensor and without sensor. Robust Ball bearings ensure excellent service life with  $\geq 5000$ Hrs. Drivers are also available as an Add-On unit on special request.

These motors are available in different speeds and different voltages on special request. These Motors are used in combination with many Mechtext gearheads. Depending on the application, output speed, load applied etc. the type of gearhead can be selected. Various types of gears i.e poly acetal, sintered iron, brass & steel gears can be used based on the load considerations. Poly acetal or sintered gears usually are used for noise dampening & complete poly acetal gears are used when the output torque required is less. All bearings are permanently lubricated and therefore require no maintenance.

### Standard Data

Motor type	Brushless dc motor	
Ambient temperature operation	-60 to +130 °C	
Storage & Transport Temperature	-70 to +210 °C	
Combination with Mechtext Gear Series	GB5P/5H, GB 380CP, GB B/C/L.	
Standard motor voltages	Vdc	24 volts
Weight	g	85
Sensor Supply Range	Vdc	4.2~24
Sensor Output	Open collector	
Mounting	By snap clip or by screws	
Terminal Inductance $\pm 15\%$	mH	1.54 mH @1KHz
Terminal Resistance	$\Omega$	4.45
Rotor Inertia	gcm <sup>2</sup>	103.6
Winding Type	Star Connection	
Insulation Class	E	
Electrical Enclosure	IP	40
Life expectancy	$\geq 5000$ hours @ Rated Torque	
Direction	Reversible	

### Motor Connections

Connector Pin No.	Description	PIN Connection
1	Hall Sensor 1	HU
1	Hall Sensor 2	HV
1	Vhall 4.5...24VDC	(+5V)
1	MOTOR WINDING 3	W
1	HALL-SENSOR 3	HW
1	GND	GND
1	MOTOR WINDING 1	U
1	MOTOR WINDING 2	V

### Technical Data

Mechtext Model No.	Physical data		No load data		Data at Rated Torque		Stall		
	Dim. mm	Voltage	Speed	No-Load Current A	Current	Torque	Effic. (%)	Torque	Current
B042219	42 X 19	24	RPM	0.130	Amps	Ncm	(%)	Ncm	A
			4420	0.130	1.100	5,700	74%	23,700	4.8

\*Other Speeds & voltages on special request

### Dimensional Drawing

