

Gear Series **GB4**

Spur Reduction Gearhead -5 Nm



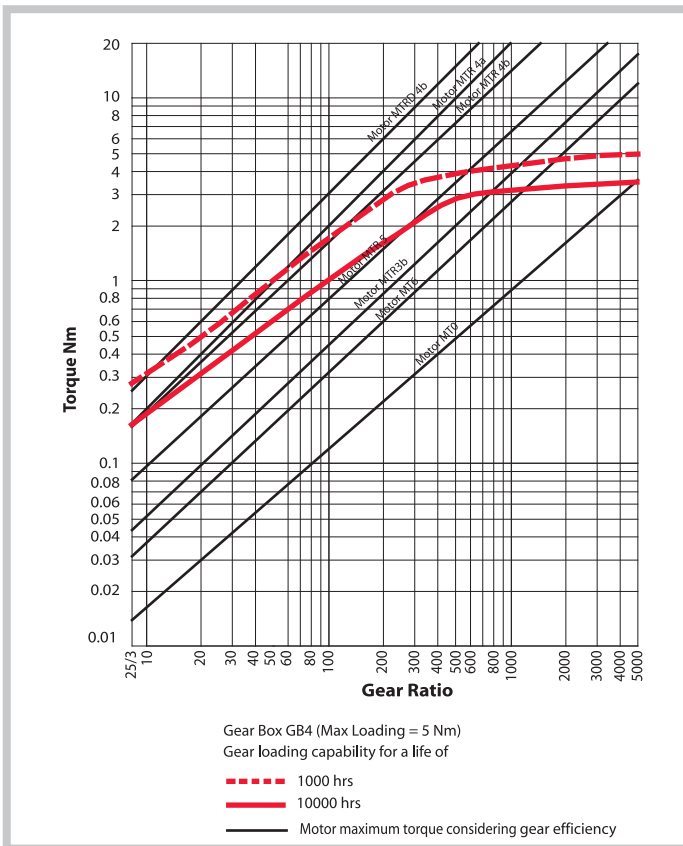
Design

Gearhead GB4 contains heavily loaded steel gear wheels. The spur gears rotate on fixed steel spindles which are hardened and polished to a mirror finish. The thick output shaft rotates in robust sintered bushings. It can also be mounted on a ball bearing which can be provided in the output bush of the gear box. All the gears are housed between two metal plates with a plastic frame. All bearings are permanently lubricated and therefore require no maintenance. Economical versions with poly-acetal or sintered gears available. This gear box can also be combined with small to medium sizes of DC motors.

Standard Data

Gear Type		Spur
Gear Torque	Nm	5
Combination with Mechtex motors		MT0, MT6, MTR/S3a/3b, MTR/S-5, MTR/S 4a/4b/D4b and small DC motors / (upto 40)
Mounting		any position
Weight	g	350
Axial thrust	N	100
Lateral force	N	300
Radial torque	Nm	4
Slipping clutches/free wheel		available for certain ratios
Output bearing		Sintered Bronze sleeve bushings, (Ball Bearing on request)
Output shafts	Ø	dia. 8 x 23 mm (with a flat), others on request
Ambient temperature operation	°C	-15...+ 55
Enclosure	IP	30

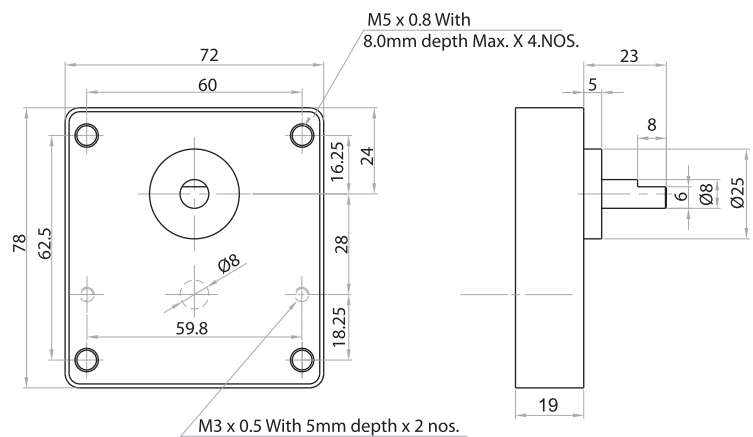
Torque/Transmission Ratio/Life Graph



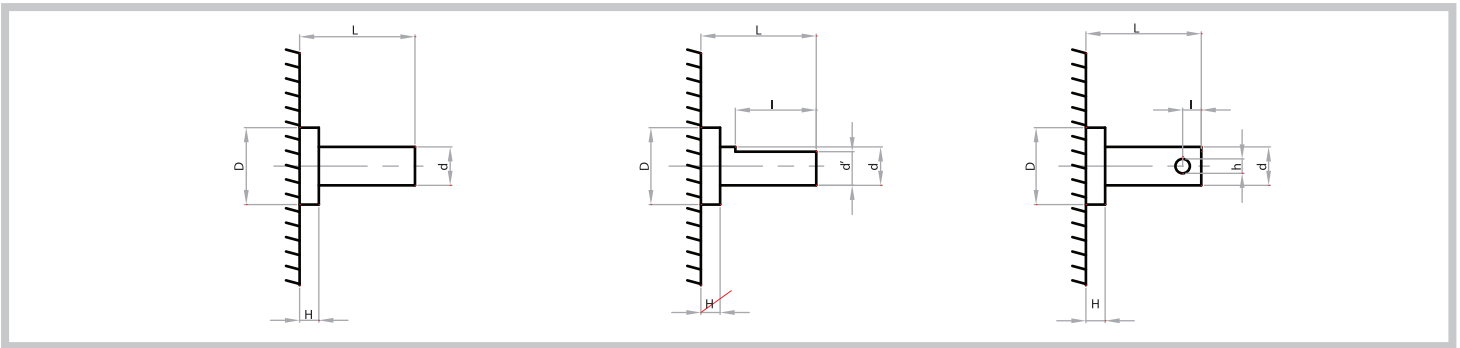
Transmission Ratios

For Transmission Ratios refer to page no.6

Dimensional Drawing



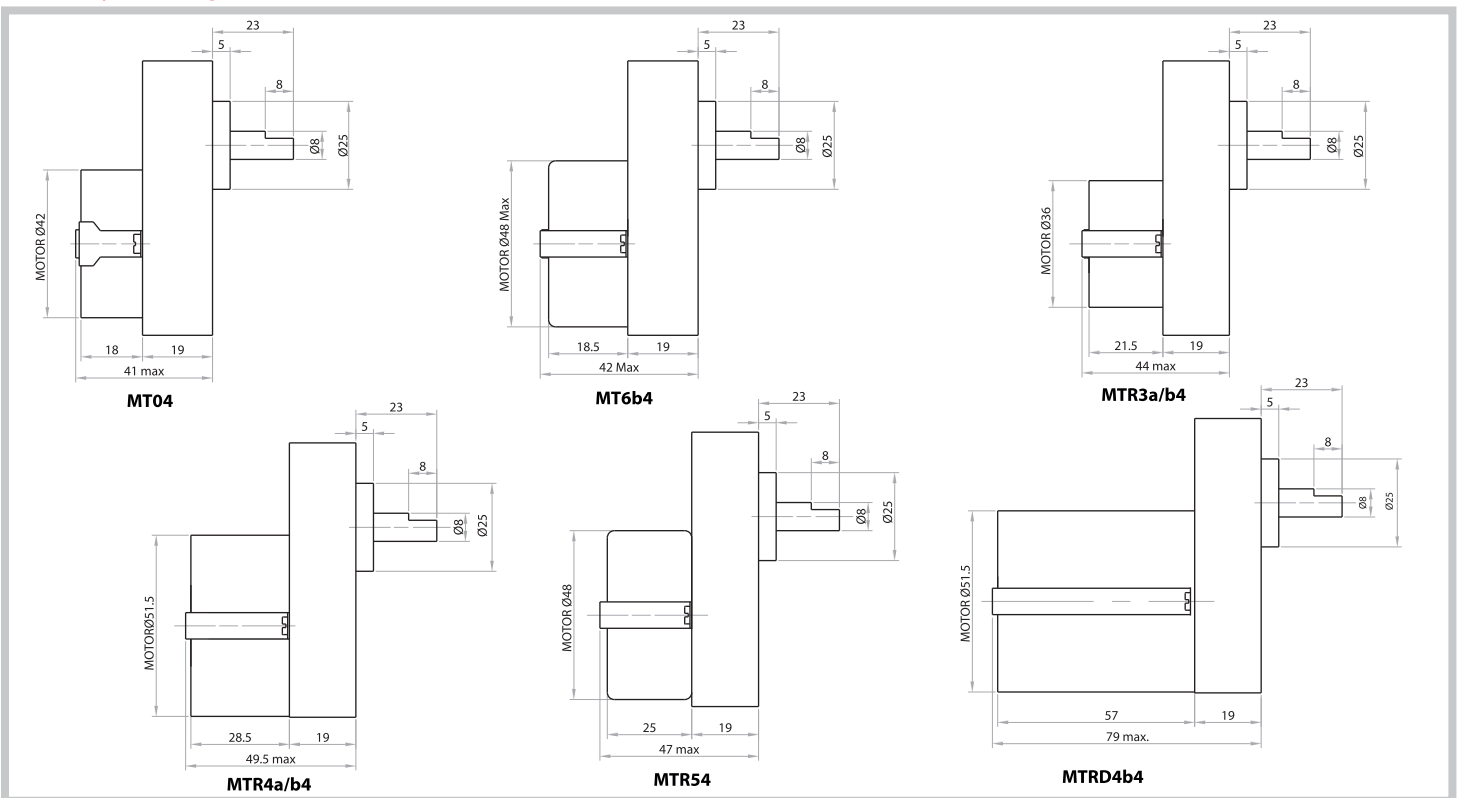
Shaft Drawings



Shaft Type Catalogue

Shaft type	D (+0.00/ -0.10)	H	d(dia)	L	l	d'	h
OS	25	5	8	23	8	6	
OA	25	5	8	33	18	6	
OC	25	5	8	23	9		3

Assembly Drawings



Photographs

